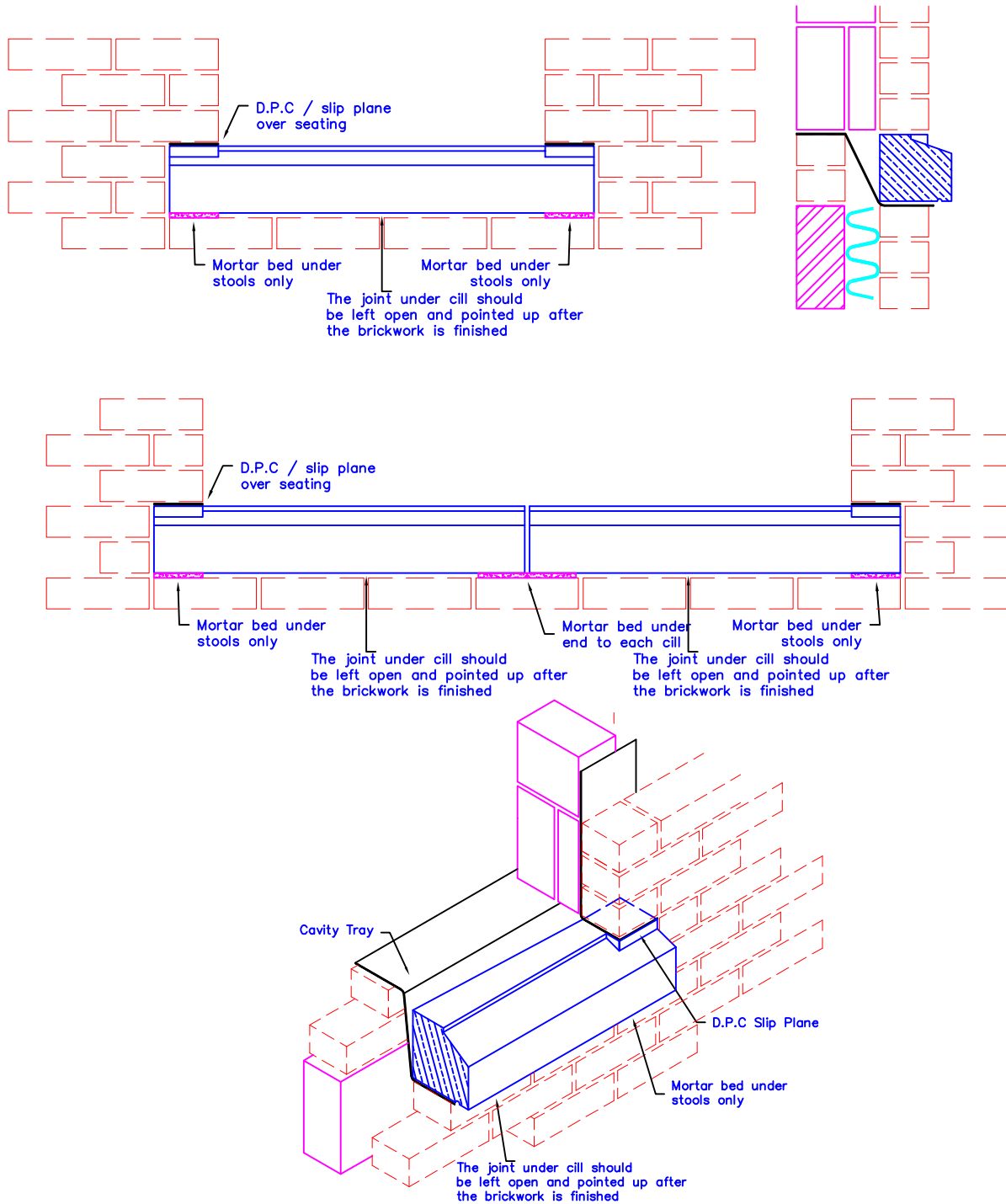


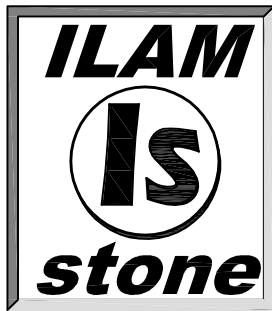
# Installation advice Stooled Cill

Installation of cast stone should be carried out by experienced operatives.

Stooled Cills :- To prevent cracking after installation only the ends and Cill joints should be bedded on mortar. The joint below should be left open and pointed up after the brickwork is finished.

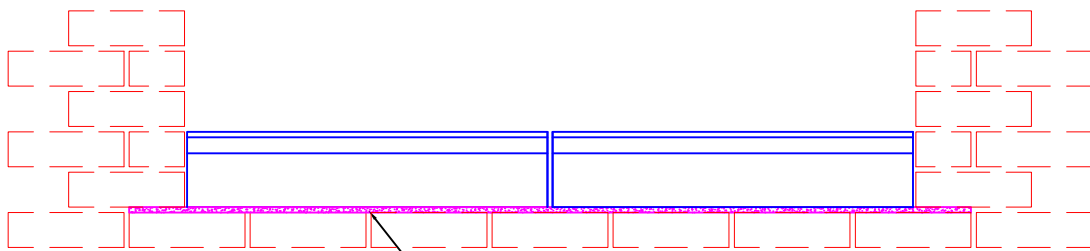


Advice offered by *ILAM Stone Ltd* is given in good faith and is to the best of our knowledge accurate and true, it is, however, offered without guarantee.

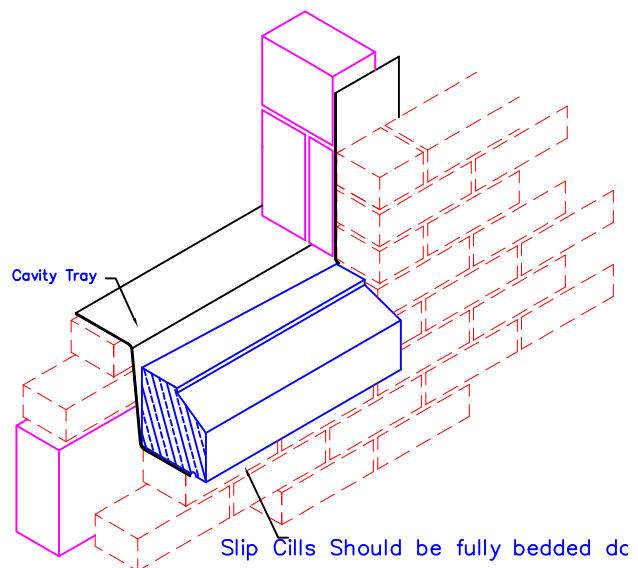
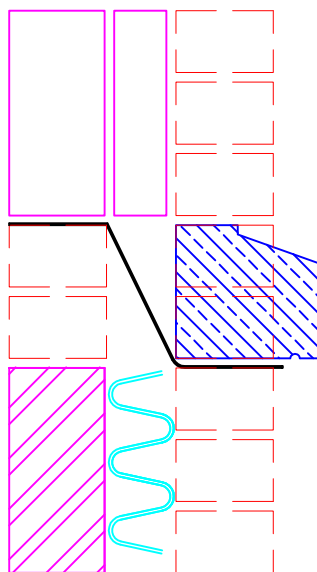


## Installation advice Slip Cill

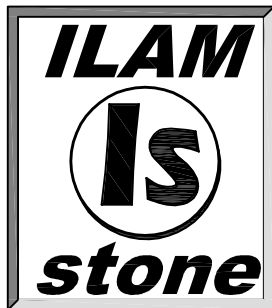
Installation of cast stone should be carried out by experienced operatives.  
Slip Cills :- Should be fully bedded down on mortar.



Slip Cills Should be fully bedded down on mortar



Slip Cills Should be fully bedded dc

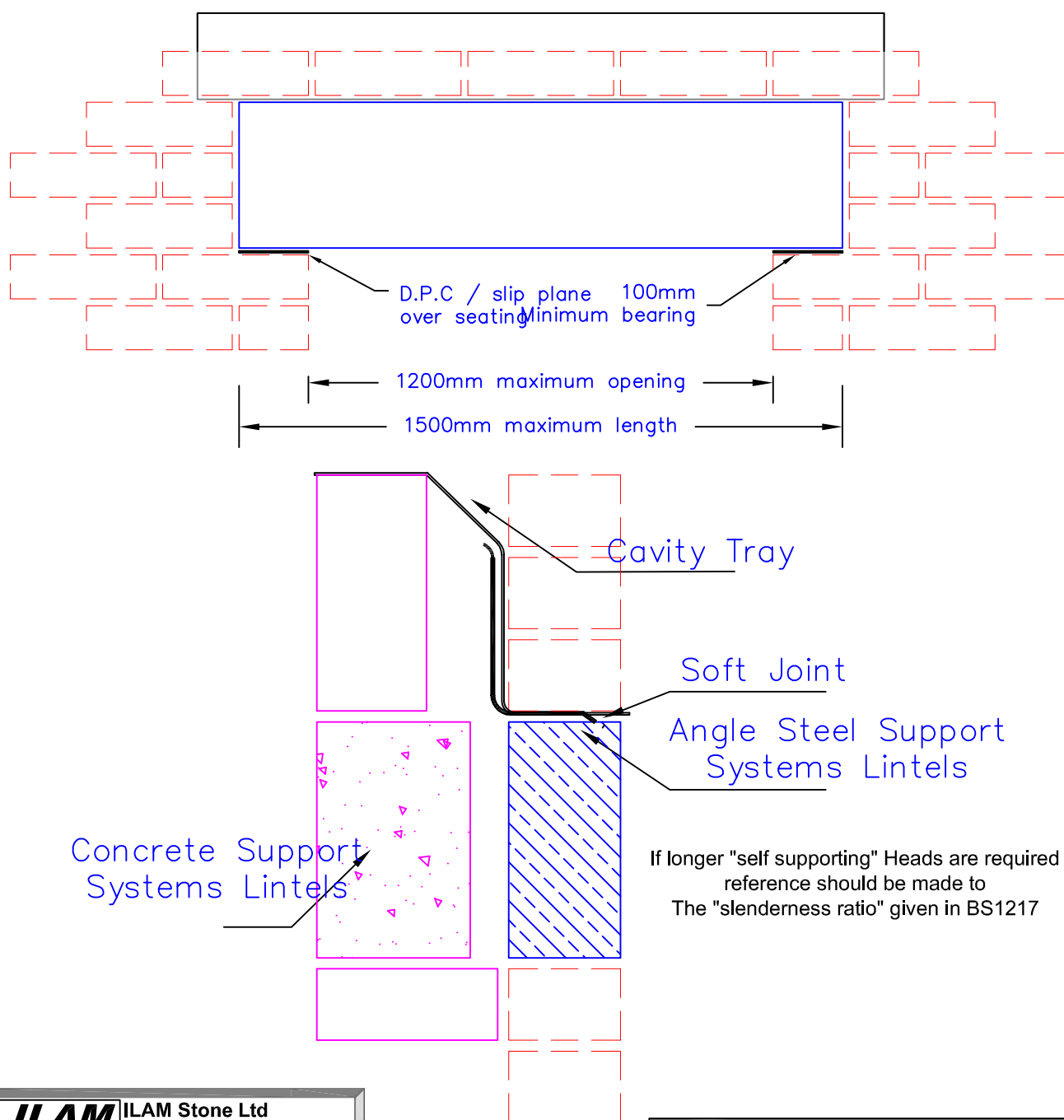


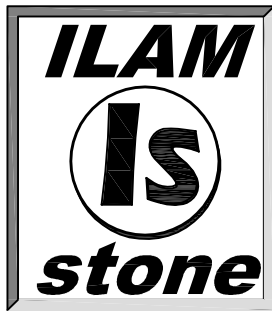
# Installation advice

## Self Supporting one piece Head Up to 1200mm opening

Installation of cast stone should be carried out by experienced operatives.

Self Supporting Heads :- Should be used in conjunction with a steel lintel longer than the cast stone head to transfer the imposed load from above into the adjacent building medium. A slip plane will be required at the end of the cast stone head as well as a soft joint between the top of the head and the steel support lintel.





# Installation advice

## Support for one or more segment Stone Head

Installation of cast stone should be carried out by experienced operatives.

Decorative Heads :- Should be used in conjunction with a suitable load-bearing lintel. To reduce the risk of cracking, the Head should be fully bedded down on mortar along the entire length of load-bearing lintel.

This ensures that any load above the Head is fully and evenly distributed on the load-bearing lintel.

